

THE ROLE OF OT IN HOME MODIFICATIONS

Home Modification and Aging in Place
Conference, Vaughn, ONTARIO, 2018

Client Assessment

- Health Care Professional
- Person-Occupation-Environment performance model
- Activities of Daily Living (ADL's) care giving needs
- Cognitive, Physical and Psychosocial screening
- Measure the client and their mobility device
- Ergonomics and Biomechanics



Determining Future Needs

- COPM to identify goals and prioritizing goals.
- Changes associated with aging and progression of medical conditions and disabilities.
- Tough conversations about future needs.
- Do it once. Do it Right.
- OT's are client advocates and educators
- Informed decision making based on evidence-based education



Environmental Assessment

- Site tour (garage, pathway, lighting, security, etc.)
- Measure relevant aspects of the home
- Climate considerations
- Structural limitations
- Technology Support
- Determine if home is appropriate to age in place or is a move more practical.



Identifying Current and Future Barriers

- Prioritizing current and potential barriers in the built environment.
- Access to environmental controls and appliances.
- Safety and Security considerations.
- Determine if home is appropriate to age in place or not.



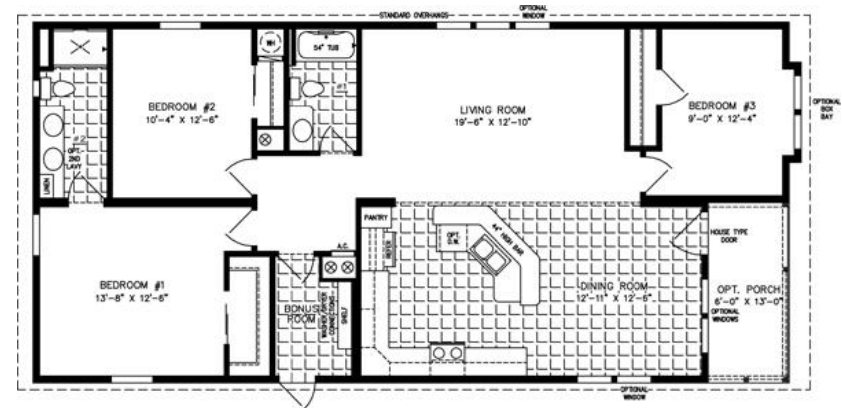
Creating Scope of Work

- Required features and purpose
- Include project objectives so contractors understand the “why”
- Allows contractors to provide “apples to apples” quotes.
- Some OT engage one company to create scope of work for others to provide quotes on.



Collaboration with Team

- Create and read design drawings.
- Discuss features of finishes and materials to be used.
- Discuss esthetics and prioritize client project goals.
- Involved in assessment, design, construction and post-construction phase of the project.



Involved in all Phases

- Assessment
 - Design
 - Contractor Quote Reviews
 - Construction
 - Post-modification Evaluation
-
- The OT can assist the client through the home modification process to ensure continuity of care, quality assurance, and to reach outcome measures.

Post-Modification Evaluation

- Do the Home Mods meet client goals?
- Were the features and design applied as intended?
- Have product instructions been provided?
- Is the client happy with the result?
- Use COPM to measure outcomes.



Challenges

- Lack of funding for OT assessments and Home Modifications (variable across Canada)
- Contractors deviating from OT recommendations
- Clients opting for cost savings versus solutions with higher impact.
- Clients in denial about future needs or aging decline



Defining Accessibility and Housing Options and feature criteria.

- Universal Design
- Adaptable Design
- Barrier-free Design
- Life span housing
- Home Sharing
- Co-living
- Retirement communities
- Mixed Generation Living
- Inclusive housing
-and more!

Questions?

